

BIOLOG)) LABORATORY

COMPREHENSIVE RFID TEMPERATURE READING AND IDENTIFICATION SOLUTION



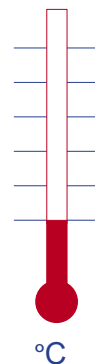
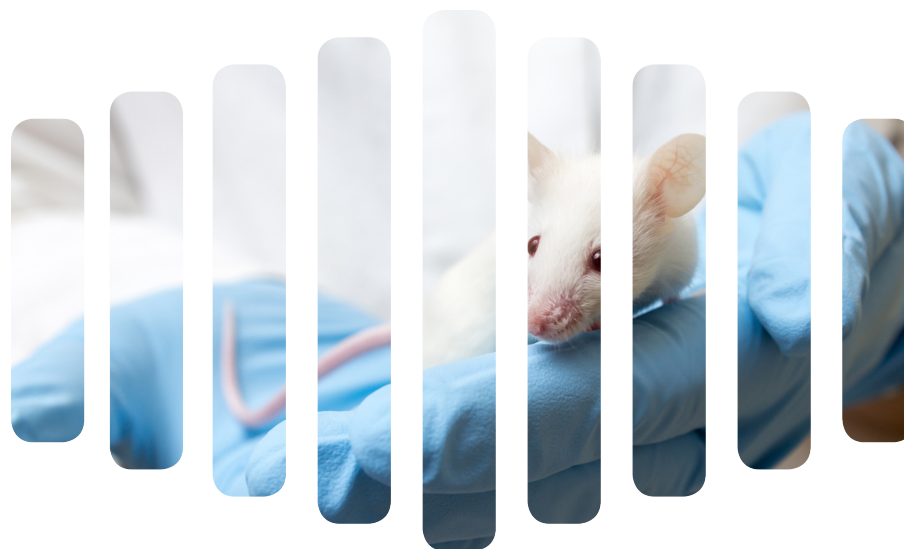
Reliable and easy to use: the perfect solution for you!

biolog))id

Contacts : Philippe CORDIER : 02 32 47 83 63 / Kévin CALEIRA 02 32 47 83 67
Headquarters/Contact: 1, rue du Commandant Robert Malrait ZA des Granges
BP 30303 - 27303 BERNAY CEDEX - FRANCE - Tél. : +33(0)2 32 47 83 40 - Fax : +33(0)2 32 47 83 50

BIOLOG)) LABORATORY

RFID TEMPERATURE READING AND IDENTIFICATION SOLUTION



TEMPERATURE READING
VIA RFID

 biolog-animal



Biolog-Temp

Technical features

- Ready-for-use single-piece sterile injector,
- Size of the tag: 2.1 mm x 13 mm
- Weight: 0.109 g (+/- 0.030 g),
- Storage temperature: - 40°C to + 90°C,
- Operating temperature: - 25°C to + 85°C,
- Temperature control range: + 33°C to + 43°C,
- Biocompatible,
- BioBond anti-migration technology,
- Temperature sensor,
- RFID FDX-B (full duplex), passive transponder uses the 134.20 khz frequency,
- iso 11784/11785 international certification
- Compliant with ISO 11135 and 11607 sterility standards for the sterilisation of Medical devices

“Biolog-Temp” single-piece sterile injector, equipped with a latest-generation passive RFID identification transponder and a temperature sensor integrated into the tag’s circuit, thereby allowing the reader to simultaneously read the ID no. and the temperature. Compliant with the usual ISO animal identification standards (ISO 11784 and ISO 11785), Biolog-Temp has the distinct advantage of monitoring the animal’s individual temperature on the implantation site, while optimising its comfort and well-being.



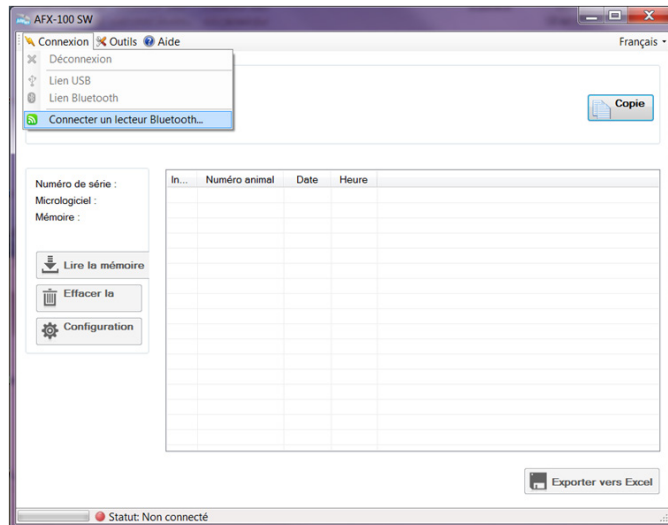
RS 1000 READER

Technical features

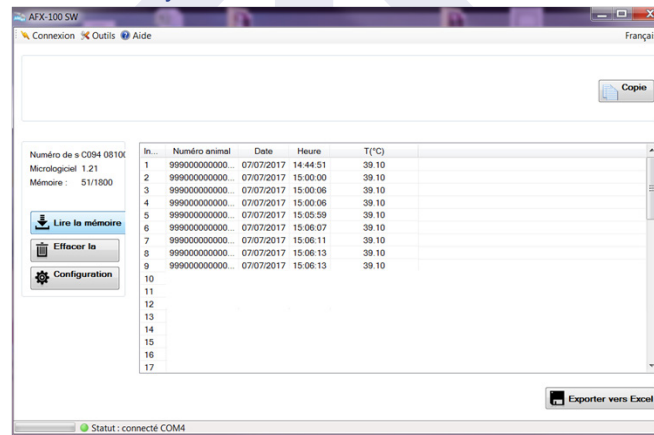
- Reading of the animal's iso tag number and temperature,
- Reading distance 0 to 15 cm depending on the type of transponder,
- Data transmission through bluetooth / usb link,
- Dimensions: 280 x 83 x 55 mm, weight: 275 g,
- Backlit graphic display 128 x 64 pixels,
- Memory function, storage capacity of 1,800
- Identifiers which can be transmitted to a pc via usb link,
- Standardised ce reader, compliant with iso 11784/11785
- Power supply: rechargeable battery 700 mAh NiMH

Software

Bluetooth connection to the reader:



Data recovery:



Excel export:

